

A modern building with a glass and metal facade, viewed from a low angle looking up. The building has a grid-like pattern of windows and panels. The sky is a pale, overcast blue.

# XinSPower

---

Committed to creating a global green power leading brand

Switching Power Supply | Power Bank | Power Strip | GaN charger | ODM

Switching Power Supply | Power Bank | Power Strip | GaN charger | ODM



# C a t a l o g

01

Company Overview

02

Company Culture

03

Product & Certificate

04

Development Plan



新斯宝科技

# Company Overview

01

PART ONE



## Company Overview

Shenzhen Xinspower Technology Co.,Ltd (XinSPower), Founded in 2008, It is the world's leading manufacturer of switching power supplies, GaN chargers ,Power Banks and other consumer electronics.

Currently, it has 12,000 square meters of single-family factory, 450+ employees and 80+ management and technical personnel.

All of our products got UL, CUL, FCC, CB, GS, CE, SAA, C-TICK, PSE, BSI, KC, CCC, etc certificates.



R & D, production and manufacturing



Skilled worker



Manufacturing Factory



Manufacturing

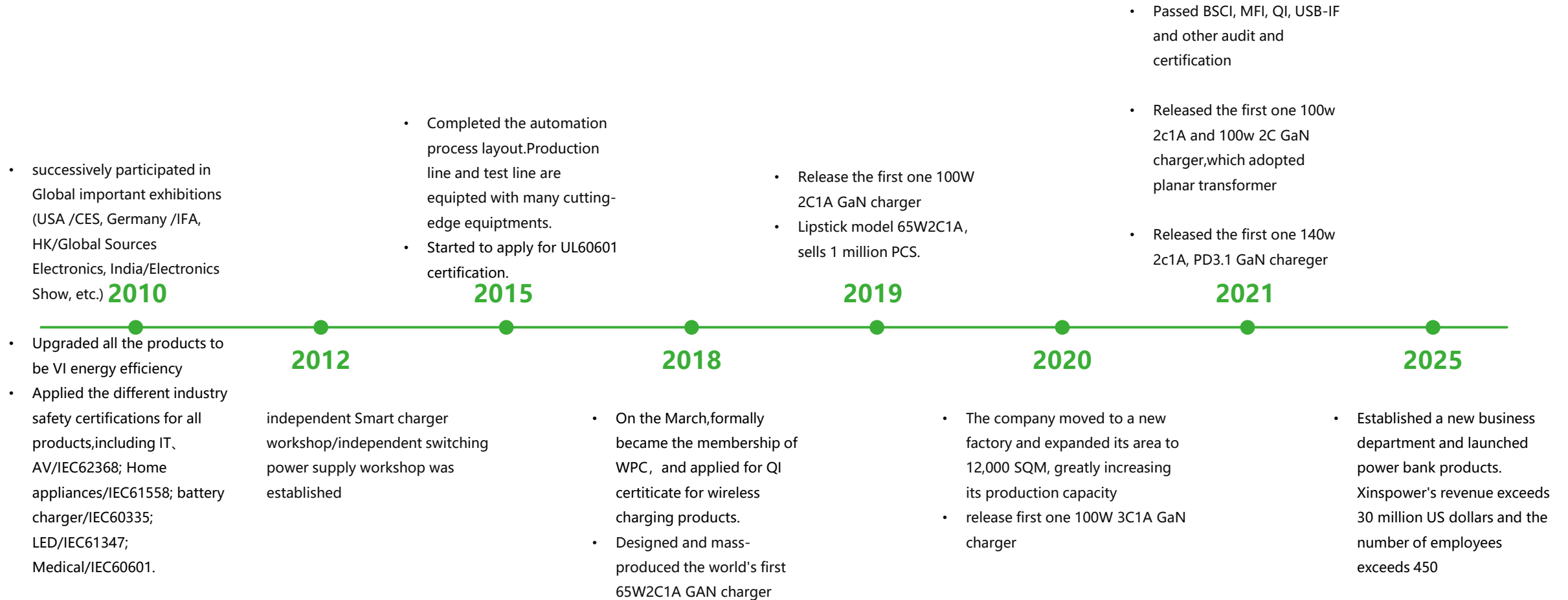


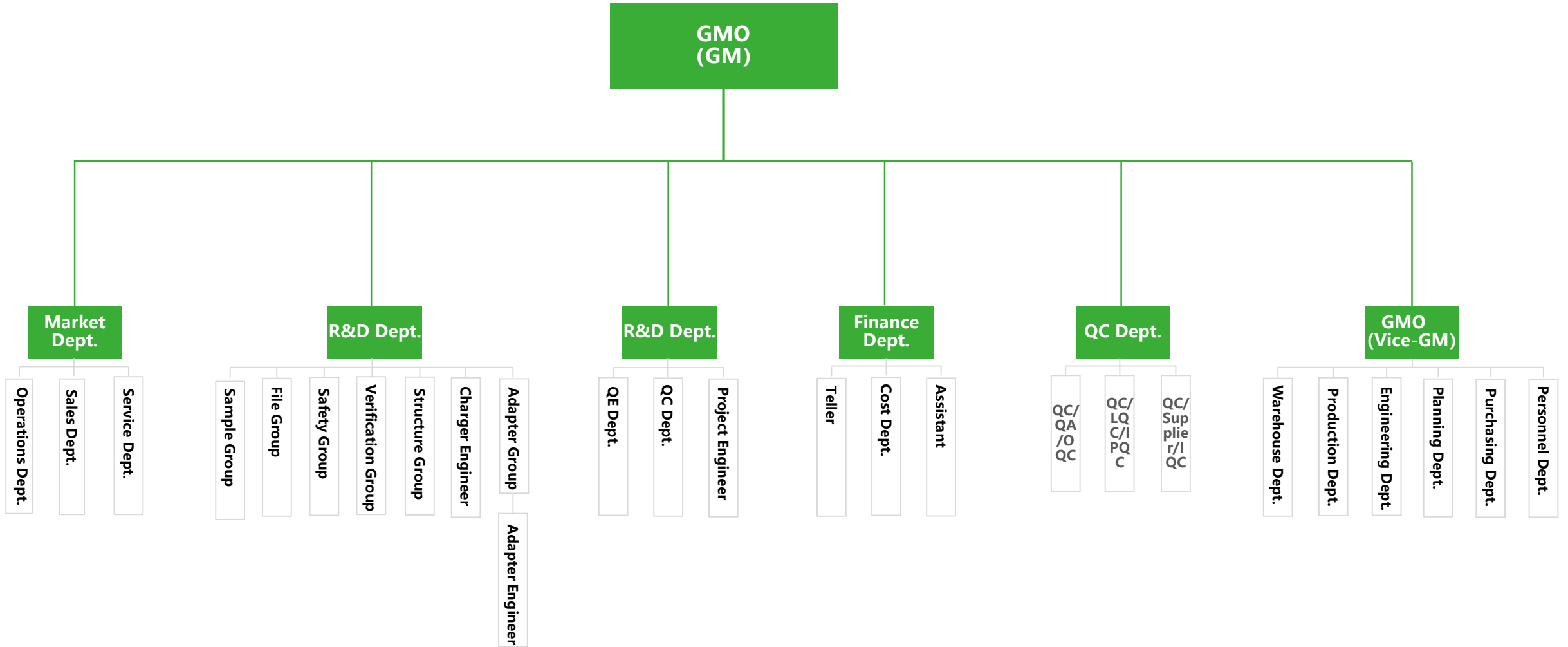
Design manufacturer



Quality management system







## State-level High-tech Enterprise



## Invention Patent



## Design Patent



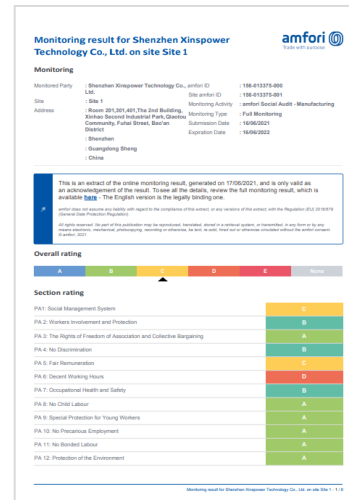
## Utility Model Patent



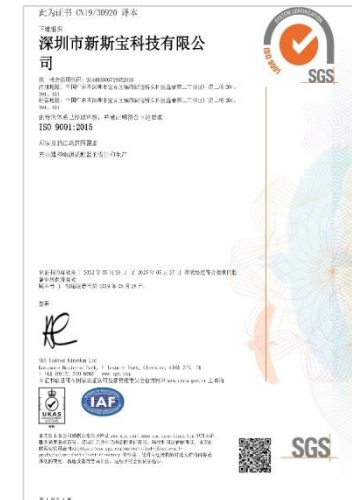
## The first UL certificate of 140W PD3.1 protocol in the industry



## BSCI Certificate



## ISO System Certificate



## Copyright certificate



Office



Production Line



Function Test



Testing Lab



Automated aging test machine



Warehouse



02  
PART TWO

C o m p a n y C u l t u r e

新斯宝科技



## Company Mission

Focus on power supply innovation

Committed to creating a global green power leading brand



## Service Spirit

all staff participation, strive for perfection!

Xinspower pays attention to the growth of each staff, and creates an excellent corporate culture atmosphere through colorful group activities. Xinspower respects, cares and improves all staffs, so that all of us have a sense of participation and belonging.

## Group building activities

Xinspower often organizes outdoor travel/group building activities for all employees, which enhances the sense of participation and happiness of employees.

## Training Enhancement

We always insist on the principles of specialization, internationalization and branding, and continue to learn and improve, innovate pioneering, which is also the magic weapon of Xinspower to lead the market innovation.



03  
PART THREE

Product & Certificate

新斯宝科技



The space is limited, please contact me for more products.

### Safety Power Banks

Focus on ODM/custom ID

### Specifications:

Capacity: 5000mAh ~ 20,000mAh

Wireless: 7.5W ~ 25W

Input and Output: 20W~65W

Safety Cell: ATL, Lishen etc.

### Certificates:



BW2011-Qi2



BW3010D-Qi2



3010P



BC3529



BW2013



PB6528L



GaN charger  
(Part)

Specifications:

Power: 30-240W

Plug type: US、EU、UK、KR、JP、CN、Desktop, etc.

Certificates:



35W,1C



35W,2C



35W,2C



66W,2C1A



65W,2C



100W,2C1A



100W,3C1A



140W,2C1A



240W,3C+1DC



**Specifications:**

**4C2A+1Wireless charging**

**Output:** 100W Max

**Wireless charging:** 15W Max

**Plug type:**

US, EU, UK, KR, JP, CN, etc.

**Certificates:** UL, FCC, PSE



**PQ1006**

**Specifications:**

**3 USB-C Power strip**

**Output:** 67W Max

**Plug type:** US, JP, CN, TW

**Certificate:** CCC, CB, PSE,

ETL



**PA6512**



**PQ659**

**Specifications:**

**2C2A+1 Wireless charging**

**Output:** 65W Max

**Wireless output:** 10W Max

**Plug type:** US, EU, UK, KR,  
JP, CN

**Certificates:** UL, FCC, CB,  
PSE, CE, KC



**PA1301**

**Specifications:**

**3C2A+3AC Power strip**

**3AC Output:** 1625W Max

**C1/C2/C3 Output:** 100W  
Max

**Plug type:** US, EU, UK,  
KR, JP, CN

**Certificates:** UL, FCC, CB,  
PSE, CE, KC

The space is limited, please contact me for more products.

## Product type:

- Wall Mount power adapter
- Detachable AC plug Power adapter
- Desktop power adapter

## Specification:

**Power:** 6W-240W

**Energy efficiency:** DOE/CEC/ERP VI

**Plug type:** US、EU、UK、AUS、JP、CN

**Safety standard:** , IEC62368, IEC61558, IEC61347

## Certificates:



### Wall Mount /US



### Wall Mount/EU



### Wall Mount /CN



### Detachable



### Detachable



### Detachable PD adapter



### Desktop power adapter/C6



### Desktop power adapter/C8



### Desktop power adapter/C14





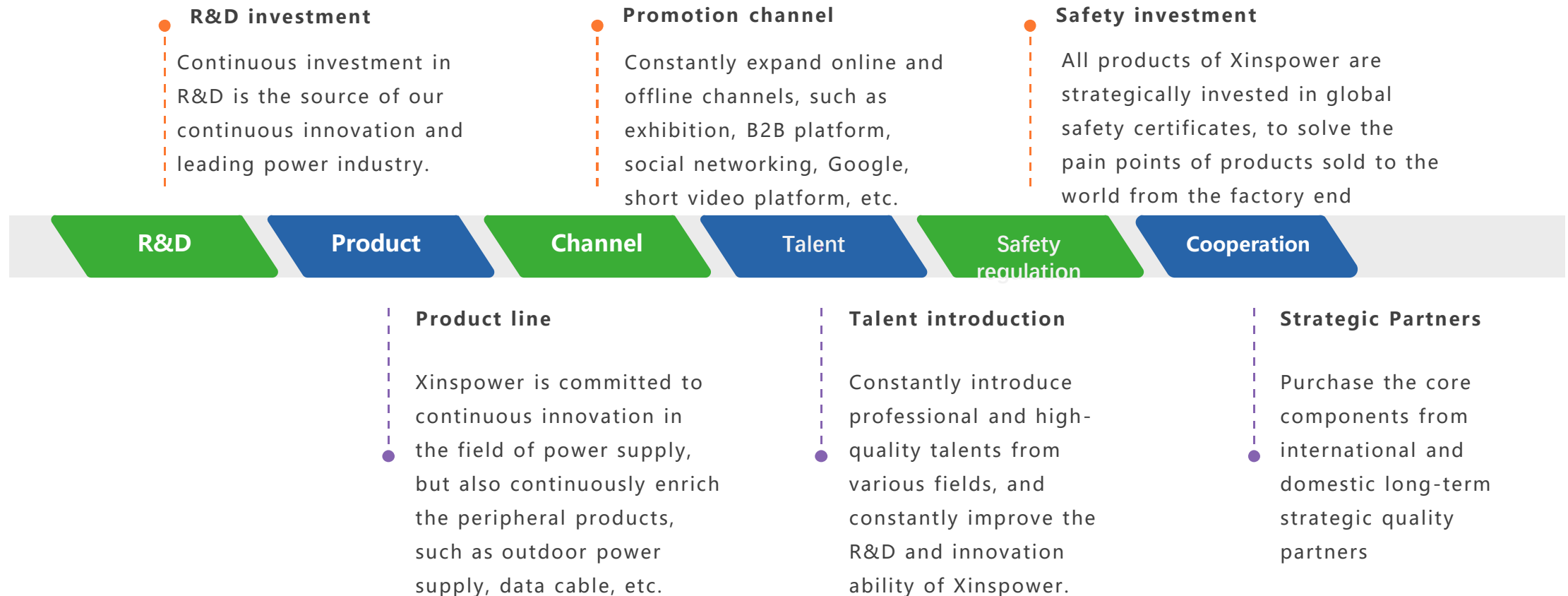
04  
PART FOUR

D e v e l o p m e n t P l a n

新斯宝科技



Xinspower is committed to building industry-leading core competitiveness, and has invested heavily in product research and development, product lines, promotion channels, talent introduction, technological innovation and other fields. With its leading technology, quality and service advantages, Xinspower has been recognized by well-known customers at home and abroad.



Building Industry-leading core competitiveness

The world famous switching power supply, smart charger, consumer electronics professional manufacturer.

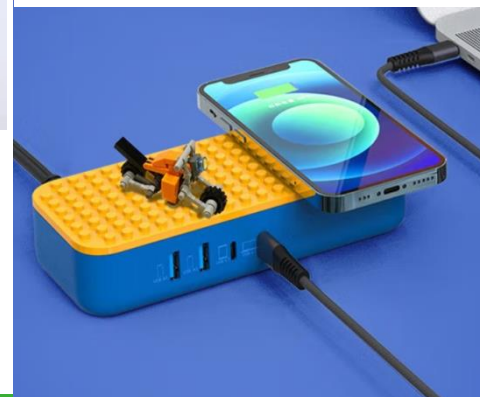
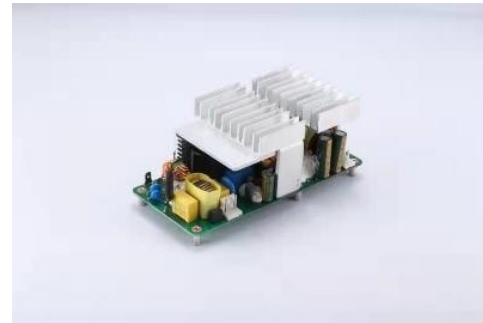
**SHARGE 闪极**  
SHARGEEEK 探索先锋系列

**再次，成为领跑者**  
率先支持 PD3.1 140W 功率

# PD3.1

搜索: SHARGE 闪极

SHARGE MPS XinSPower GaNFast  
联合首发



### Building Industry-leading core competitiveness

With its leading technology, quality and service advantages, Xinspower has been recognized by many famous customers at home and abroad, and widely praised by global customers, such as Anker, Deli, Haier, ABB, Lenovo and other famous large

good partners of each other.



USA/CES



Germany/IFA



Shenzhen/Chongdi antou exhibition



HK global sources exhibition



Asia/Charger exhibition



Korea/KES



Germany/CeBIT



Shenzhen . Gift Show



# THANKS FOR WATCHING

FOCUS ON POWER SUPPLIES INNOVATION

## Shen Zhen factory/company

Shenzhen Xinspower Technology CO.,Ltd

Address: Bldg 2, XinHao Industry Park,  
No.11, FuRui Road, FuHai Street, BaoAn,  
ShenZhen City, China

Phone: +86-755-23500826

Fax: +86-755-23500926

website: [www.xinspowertech.com](http://www.xinspowertech.com)

Email: [sales@xinspower.com](mailto:sales@xinspower.com)

Switching Power Supply  
Input: AC 100-240V 50/60Hz 0.5A Max.  
Output: 5V 2.1A / 5.1V 2.0A / 5.5V 1.8A / 6.0V 1.6A / 6.5V 1.5A / 7.5V 1.3A / 8.5V 1.1A / 9.0V 1.0A / 9.5V 0.9A / 10.5V 0.8A / 11.5V 0.7A / 12.5V 0.6A / 13.5V 0.5A / 15.0V 0.4A / 16.5V 0.3A / 18.0V 0.25A / 19.5V 0.2A / 21.0V 0.15A / 22.5V 0.1A / 24.0V 0.075A / 25.5V 0.05A / 27.0V 0.035A / 28.5V 0.025A / 30.0V 0.015A / 31.5V 0.01A / 33.0V 0.0075A / 34.5V 0.005A / 36.0V 0.0035A / 37.5V 0.0025A / 39.0V 0.0015A / 40.5V 0.001A / 42.0V 0.00075A / 43.5V 0.0005A / 45.0V 0.00035A / 46.5V 0.00025A / 48.0V 0.00015A / 49.5V 0.0001A / 51.0V 0.000075A / 52.5V 0.00005A / 54.0V 0.000035A / 55.5V 0.000025A / 57.0V 0.000015A / 58.5V 0.00001A / 60.0V 0.0000075A / 61.5V 0.000005A / 63.0V 0.0000035A / 64.5V 0.0000025A / 66.0V 0.0000015A / 67.5V 0.000001A / 69.0V 0.00000075A / 70.5V 0.0000005A / 72.0V 0.00000035A / 73.5V 0.00000025A / 75.0V 0.00000015A / 76.5V 0.0000001A / 78.0V 0.000000075A / 79.5V 0.00000005A / 81.0V 0.000000035A / 82.5V 0.000000025A / 84.0V 0.000000015A / 85.5V 0.00000001A / 87.0V 0.0000000075A / 88.5V 0.000000005A / 90.0V 0.0000000035A / 91.5V 0.0000000025A / 93.0V 0.0000000015A / 94.5V 0.000000001A / 96.0V 0.00000000075A / 97.5V 0.0000000005A / 99.0V 0.00000000035A / 100.5V 0.00000000025A / 102.0V 0.00000000015A / 103.5V 0.0000000001A / 105.0V 0.000000000075A / 106.5V 0.00000000005A / 108.0V 0.000000000035A / 109.5V 0.000000000025A / 111.0V 0.000000000015A / 112.5V 0.00000000001A / 114.0V 0.0000000000075A / 115.5V 0.000000000005A / 117.0V 0.0000000000035A / 118.5V 0.0000000000025A / 120.0V 0.0000000000015A / 121.5V 0.000000000001A / 123.0V 0.00000000000075A / 124.5V 0.0000000000005A / 126.0V 0.00000000000035A / 127.5V 0.00000000000025A / 129.0V 0.00000000000015A / 130.5V 0.0000000000001A / 132.0V 0.000000000000075A / 133.5V 0.00000000000005A / 135.0V 0.000000000000035A / 136.5V 0.000000000000025A / 138.0V 0.000000000000015A / 139.5V 0.00000000000001A / 141.0V 0.0000000000000075A / 142.5V 0.000000000000005A / 144.0V 0.0000000000000035A / 145.5V 0.0000000000000025A / 147.0V 0.0000000000000015A / 148.5V 0.000000000000001A / 150.0V 0.00000000000000075A / 151.5V 0.0000000000000005A / 153.0V 0.00000000000000035A / 154.5V 0.00000000000000025A / 156.0V 0.00000000000000015A / 157.5V 0.0000000000000001A / 159.0V 0.000000000000000075A / 160.5V 0.00000000000000005A / 162.0V 0.000000000000000035A / 163.5V 0.000000000000000025A / 165.0V 0.000000000000000015A / 166.5V 0.00000000000000001A / 168.0V 0.0000000000000000075A / 169.5V 0.000000000000000005A / 171.0V 0.0000000000000000035A / 172.5V 0.0000000000000000025A / 174.0V 0.0000000000000000015A / 175.5V 0.000000000000000001A / 177.0V 0.00000000000000000075A / 178.5V 0.0000000000000000005A / 180.0V 0.00000000000000000035A / 181.5V 0.00000000000000000025A / 183.0V 0.00000000000000000015A / 184.5V 0.0000000000000000001A / 186.0V 0.000000000000000000075A / 187.5V 0.00000000000000000005A / 189.0V 0.000000000000000000035A / 190.5V 0.000000000000000000025A / 192.0V 0.000000000000000000015A / 193.5V 0.00000000000000000001A / 195.0V 0.0000000000000000000075A / 196.5V 0.000000000000000000005A / 198.0V 0.0000000000000000000035A / 199.5V 0.0000000000000000000025A / 201.0V 0.0000000000000000000015A / 202.5V 0.000000000000000000001A / 204.0V 0.00000000000000000000075A / 205.5V 0.0000000000000000000005A / 207.0V 0.00000000000000000000035A / 208.5V 0.00000000000000000000025A / 210.0V 0.00000000000000000000015A / 211.5V 0.0000000000000000000001A / 213.0V 0.000000000000000000000075A / 214.5V 0.00000000000000000000005A / 216.0V 0.000000000000000000000035A / 217.5V 0.000000000000000000000025A / 219.0V 0.000000000000000000000015A / 220.5V 0.00000000000000000000001A / 222.0V 0.0000000000000000000000075A / 223.5V 0.000000000000000000000005A / 225.0V 0.0000000000000000000000035A / 226.5V 0.0000000000000000000000025A / 228.0V 0.0000000000000000000000015A / 229.5V 0.000000000000000000000001A / 231.0V 0.00000000000000000000000075A / 232.5V 0.0000000000000000000000005A / 234.0V 0.00000000000000000000000035A / 235.5V 0.00000000000000000000000025A / 237.0V 0.00000000000000000000000015A / 238.5V 0.0000000000000000000000001A / 240.0V 0.000000000000000000000000075A / 241.5V 0.00000000000000000000000005A / 243.0V 0.000000000000000000000000035A / 244.5V 0.000000000000000000000000025A / 246.0V 0.000000000000000000000000015A / 247.5V 0.00000000000000000000000001A / 249.0V 0.0000000000000000000000000075A / 250.5V 0.000000000000000000000000005A / 252.0V 0.0000000000000000000000000035A / 253.5V 0.0000000000000000000000000025A / 255.0V 0.0000000000000000000000000015A / 256.5V 0.000000000000000000000000001A / 258.0V 0.00000000000000000000000000075A / 259.5V 0.0000000000000000000000000005A / 261.0V 0.00000000000000000000000000035A / 262.5V 0.00000000000000000000000000025A / 264.0V 0.00000000000000000000000000015A / 265.5V 0.0000000000000000000000000001A / 267.0V 0.000000000000000000000000000075A / 268.5V 0.00000000000000000000000000005A / 270.0V 0.000000000000000000000000000035A / 271.5V 0.000000000000000000000000000025A / 273.0V 0.000000000000000000000000000015A / 274.5V 0.00000000000000000000000000001A / 276.0V 0.0000000000000000000000000000075A / 277.5V 0.000000000000000000000000000005A / 279.0V 0.0000000000000000000000000000035A / 280.5V 0.0000000000000000000000000000025A / 282.0V 0.0000000000000000000000000000015A / 283.5V 0.000000000000000000000000000001A / 285.0V 0.00000000000000000000000000000075A / 286.5V 0.0000000000000000000000000000005A / 288.0V 0.00000000000000000000000000000035A / 289.5V 0.00000000000000000000000000000025A / 291.0V 0.00000000000000000000000000000015A / 292.5V 0.0000000000000000000000000000001A / 294.0V 0.000000000000000000000000000000075A / 295.5V 0.00000000000000000000000000000005A / 297.0V 0.000000000000000000000000000000035A / 298.5V 0.000000000000000000000000000000025A / 300.0V 0.000000000000000000000000000000015A / 301.5V 0.00000000000000000000000000000001A / 303.0V 0.0000000000000000000000000000000075A / 304.5V 0.000000000000000000000000000000005A / 306.0V 0.0000000000000000000000000000000035A / 307.5V 0.0000000000000000000000000000000025A / 309.0V 0.0000000000000000000000000000000015A / 310.5V 0.000000000000000000000000000000001A / 312.0V 0.00000000000000000000000000000000075A / 313.5V 0.0000000000000000000000000000000005A / 315.0V 0.00000000000000000000000000000000035A / 316.5V 0.00000000000000000000000000000000025A / 318.0V 0.00000000000000000000000000000000015A / 319.5V 0.0000000000000000000000000000000001A / 321.0V 0.000000000000000000000000000000000075A / 322.5V 0.00000000000000000000000000000000005A / 324.0V 0.000000000000000000000000000000000035A / 325.5V 0.000000000000000000000000000000000025A / 327.0V 0.000000000000000000000000000000000015A / 328.5V 0.00000000000000000000000000000000001A / 330.0V 0.0000000000000000000000000000000000075A / 331.5V 0.000000000000000000000000000000000005A / 333.0V 0.0000000000000000000000000000000000035A / 334.5V 0.0000000000000000000000000000000000025A / 336.0V 0.0000000000000000000000000000000000015A / 337.5V 0.000000000000000000000000000000000001A / 339.0V 0.00000000000000000000000000000000000075A / 340.5V 0.0000000000000000000000000000000000005A / 342.0V 0.00000000000000000000000000000000000035A / 343.5V 0.00000000000000000000000000000000000025A / 345.0V 0.00000000000000000000000000000000000015A / 346.5V 0.0000000000000000000000000000000000001A / 348.0V 0.000000000000000000000000000000000000075A / 349.5V 0.00000000000000000000000000000000000005A / 351.0V 0.000000000000000000000000000000000000035A / 352.5V 0.000000000000000000000000000000000000025A / 354.0V 0.000000000000000000000000000000000000015A / 355.5V 0.00000000000000000000000000000000000001A / 357.0V 0.0000000000000000000000000000000000000075A / 358.5V 0.000000000000000000000000000000000000005A / 360.0V 0.0000000000000000000000000000000000000035A / 361.5V 0.0000000000000000000000000000000000000025A / 363.0V 0.0000000000000000000000000000000000000015A / 364.5V 0.000000000000000000000000000000000000001A / 366.0V 0.00000000000000000000000000000000000000075A / 367.5V 0.0000000000000000000000000000000000000005A / 369.0V 0.00000000000000000000000000000000000000035A / 370.5V 0.00000000000000000000000000000000000000025A / 372.0V 0.00000000000000000000000000000000000000015A / 373.5V 0.0000000000000000000000000000000000000001A / 375.0V 0.0075A / 376.5V 0.005A / 378.0V 0.0035A / 379.5V 0.0025A / 381.0V 0.0015A / 382.5V 0.001A / 384.0V 0.00075A / 385.5V 0.0005A / 387.0V 0.00035A / 388.5V 0.00025A / 390.0V 0.00015A / 391.5V 0.0001A / 393.0V 0.0075A / 394.5V 0.005A / 396.0V 0.0035A / 397.5V 0.0025A / 399.0V 0.0015A / 400.5V 0.001A / 402.0V 0.00075A / 403.5V 0.0005A / 405.0V 0.00035A / 406.5V 0.00025A / 408.0V 0.00015A / 409.5V 0.0001A / 411.0V 0.0075A / 412.5V 0.005A / 414.0V 0.0035A / 415.5V 0.0025A / 417.0V 0.0015A / 418.5V 0.001A / 420.0V 0.00075A / 421.5V 0.0005A / 423.0V 0.00035A / 424.5V 0.00025A / 426.0V 0.00015A / 427.5V 0.0001A / 429.0V 0.0075A / 430.5V 0.005A / 432.0V 0.0035A / 433.5V 0.0025A / 435.0V 0.0015A / 436.5V 0.001A / 438.0V 0.00075A / 439.5V 0.0005A / 441.0V 0.00035A / 442.5V 0.00025A / 444.0V 0.00015A / 445.5V 0.0001A / 447.0V 0.0075A / 448.5V 0.005A / 450.0V 0.0035A / 451.5V 0.0025A / 453.0V 0.0015A / 454.5V 0.001A / 456.0V 0.00075A / 457.5V 0.0005A / 459.0V 0.00035A / 460.5V 0.00025A / 462.0V 0.00015A / 463.5V 0.0001A / 465.0V 0.0075A / 466.5V 0.005A / 468.0V 0.0035A / 469.5V 0.0025A / 471.0V 0.0015A